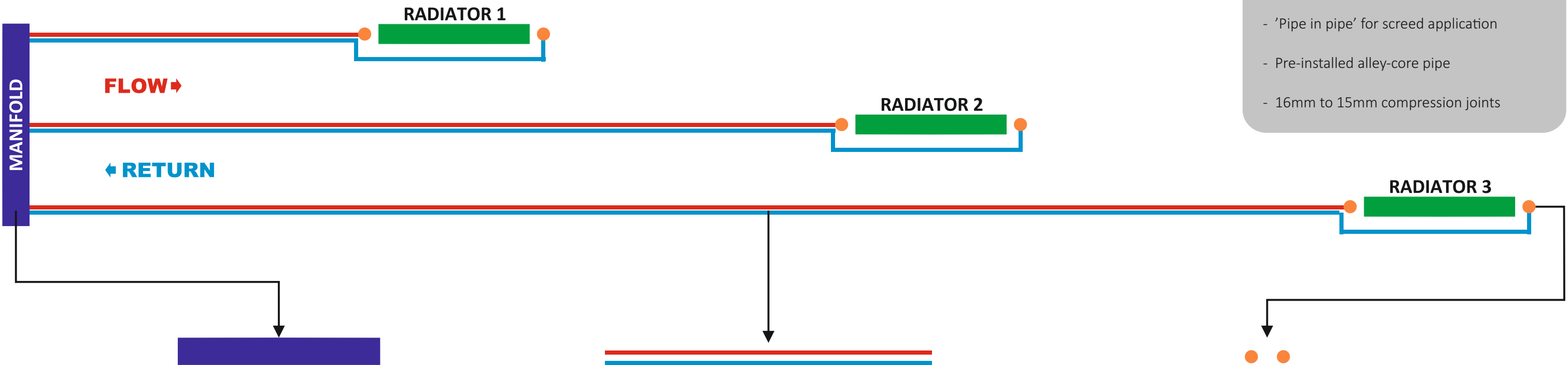


Manifold to Radiator Setup



- Additional Extras :-
- Room thermostat control - to cool radiator
 - 'Pipe in pipe' for screed application
 - Pre-installed alley-core pipe
 - 16mm to 15mm compression joints

IVAR Radiator Manifold



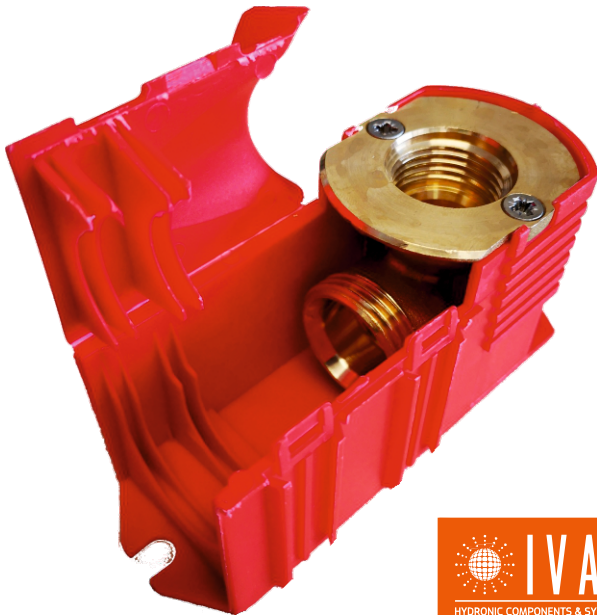
The manifold is the central 'joining point' for all of your radiators.

16mm ALLEY CORE Pipe



The aluminium core pipe connects the manifold to the radiators under the floor without the need for joints. It is also form stable, meaning it will not bend out of shape once installed.

Universal Floor Box



The purpose of the floor box enables the quick and easy link of 16mm to 15mm pipe.